



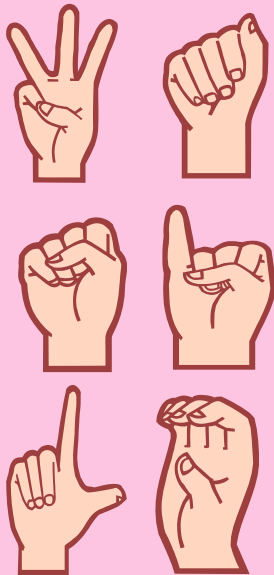
WASHINGTON STATE INDEPENDENT
LIVING COUNCIL (WASILC)

WASILC REPORT

Volume 3, Number 1

EXECUTIVE DIRECTOR REPORT

ROB HONAN



INSIDE THIS
ISSUE :

Executive Director Report	1
IL in NW WA	1
TBI Conference	2
CFI Open House	3
Deaf and HH Aware-	4
Simone and Sylvia Open House	5
Smart Phone Webinar	6
2012 Federal Budget	7
July SILC Mtg Announcement	7

Since the last time I communicated with you, we have lost a member of our family. disAbility Resources of Southwest Washington (dARSW) elected to close their doors in March. There were several reasons that they choose to do this, and I will not go into those reasons in this forum.

It has been a deep mourning period for all of the SILC members, the Center for Independent Living directors, staff, advocates and community members. We all knew the outstanding work that was going on in Vancou-

ver. I am especially proud that they were really instrumental in the TBI community with their strong support groups. I still get calls from people desperately needing this service, and I hope that this service continues in some fashion.

I also want to thank the dARSW staff for their advocacy presence, whether it was the vigils that highlighted health care cuts to their time spent in Olympia advocating for such diverse things as promoting a broader definition of disability of disability, and to educating our state and federal legis-

lators on the importance of independent living for persons with disabilities.

I especially want to thank Jim Baker, the executive director, for all of his hard work in making IL work in this state. He was extremely instrumental in assisting with 2011-2013 State Plan for Independent Living, and I am extremely grateful for that. He also has been a national leader in LGBT (Lesbian, Gay, Bisexual, and Transgendered) support in the disability community. I will miss Jim and the dARSW staff.

INDEPENDENT LIVING IN NORTHWEST WASHINGTON

The Washington State Independent Living Council has been working with Rehabilitation Services Administration to ensure that independent living remains vital in this state.

We are extremely hope-

ful that a part of the State Plan (network of Centers for Independent Living)) will be realized by Oct. 1 of this year. It is very possible that a Request for Proposal will be released soon and that a new CIL will be up

in running in Northwest Washington (Whatcom, Skagit, Snohomish, San Juan, and Island Counties).

I will let you, the readers, know more about this exciting possibility in the near future.

HATHAWAY, HONAN AND MCCLAIN ATTEND TBI CONFERENCE

By Barbara Hathaway

The Washington State TBI (Traumatic Brain Injury) Conference was held at the Marriott Hotel in SeaTac, Washington on April 28 and 29, 2011.

SILC staff members Barbara Hathaway and Rob Honan attended as did SILC member Linda McClain. Over 400 other individuals with TBI, caregivers, family members, and agencies took part in the proceedings.

The conference began with a key note on Thursday morning by Wendy Lustbader, MSW, who is an advocate for caregivers of those with TBI. Her talk was very inspiring and provided a great kickoff to the conference. The closing keynoter was Greg Goldbert,

Advocate and Motivational Speaker. He spoke about his experiences as a person with a brain injury. It was full of humor and also very informative. In between, Jesse Fann, MD, MPH, researcher and clinician, provided some medical updates on TBI.

There were five workshop tracks with sessions focusing on the following areas: Adults with TBI, Support for Caregivers, Military and Veterans Issues, Supporting Youth with TBI, Yoga, and Professional Interests. The workshops were awesome and were very beneficial in learning new things.

There was also an outstanding exhibit hall where many non-profit, for-profit and governmental agencies provided in

formation. The SILC had a display board, and over 200 people came by to see what the SILC and CILs were all about.

TBI Conference committee did a great job in providing services to Deaf and hard of hearing individuals. American Sign Language (ASL) interpreters and CART services (real-time captioning) for the Deaf and Hard of Hearing attendees.

More information about TBI and the Washington TBI Conference, go online and click onto <http://www.tbiwashington.org> (conference information was still up on the website as of May 20, 2011)

OPEN HOUSE



Center for Independence is celebrating its new home!

We hope you will join us:

Thursday, June 9th, 2011

2:00 pm to 6:00 pm

7801 Bridgeport Way West #200 in Lakewood

253.582.1253 (V)

Because so many people with disabilities truly understand why “there’s no place like home”, we hope you will join us in celebrating our new home.



Please RSVP by May 31, 2011

Rae Baghirov 253.582.1253 or raeb@centerforindependence.org

Revised Information!

Deaf & Hard of Hearing Awareness Day! at SILVERWOOD!!

Eastern Washington Center for the Deaf and Hard of Hearing & North Idaho Deaf Club

EWCDHH and NIDC have partnered to bring you:

"Deaf and Hard of Hearing Awareness Day " at SILVERWOOD!!

Date: Saturday, June 18, 2011

Time: Open 11:00am - Close 8:00pm

Tickets will be sold in advance and at the gates!

Advance:	At the Gates:
- \$30 general	- \$35 general
- \$17 youth/seniors	- \$19 youth/seniors

Meal Tickets: - \$11 general - \$5 youth/seniors

All-You-Can-Eat-Buffer! All meals are per person one time only. Meals served buffet style and include all plates, utensils, napkins and condiments. No gratuity or service charges.

Youth: 3-7 years old, Senior: 65+

Children 2 and under are free.

Please Contact EWCDHH for more information.

PARKING is \$4.00 per day separate from ticket.



EWCDHH

1206 N. Howard St.
Spokane, WA 99201

Phone: (509) 328-9220 v/tty

(509) 315-2288 vp

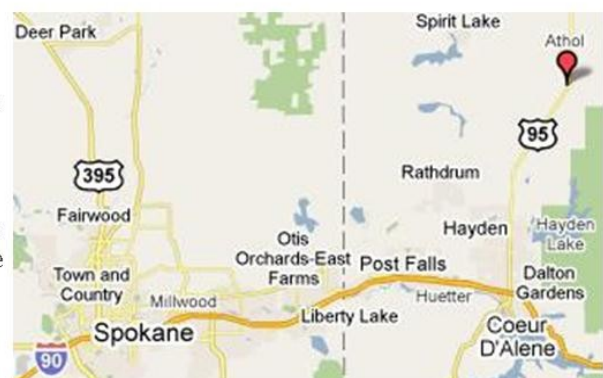
Fax: (509) 327-4622

E-mail: infodesk@ewcdhh.org



Just minutes North of Coeur d'Alene, Idaho on Highway 95 in scenic Northern Idaho. The nearest urban center is Spokane, WA, which is 30 minutes west of Coeur d'Alene on Interstate 90. Spokane's International Airport serves most major airlines. Missoula, MT is 180 miles to the east and Seattle, WA is 330 miles to the west. The Canadian border is 90 miles to the north.

Silverwood is located at: 27843 North Highway 95





SAVE THE DATE - YOU'RE INVITED!

The Washington Access Fund will be hosting an open house on Thursday, June 16th at [Simone & Sylvia](#) during the June Pike Hike Art Walk. Simone & Sylvia is a new boutique in Pike Place Market, owned and operated by Access Fund client Pennie Laird. The store is located at 1516 Western Ave. Seattle, WA 98101. Stop in for wine and cheese in Pennie's store during the [Pike Hike Art Walk](#) (Seattle's newest Art Walk!).

Simone and Sylvia is a small boutique, home to a must see collection of vintage-inspired clothes. Pennie offers an exquisite collection of ready-to-wear items, custom clothing and patternmaking, an adorable array of children's outfits, as well as alterations. Pennie is one talented individual!

SILC Members (click for biographical information):

[Romel Mackelprang, Chair](#)

[Gilbert Garza](#)

[Jana Finkbonner, Vice Chair](#)

[Charity Drummond](#)

[Sandra Carr, Member at Large](#)

[Andrés Aguirre, Ex-Officio](#)

[Linda McClain, ACIL-WA Rep.](#)

[Debbie Cook, Ex-Officio](#)

[Trina Forest](#)

[Devin Beach](#)

[Al Neely](#)





FREE Webinar: How to Select a Smartphone

Join us for a webinar on Wednesday, June 8th from 10:30am-12pm! This webinar will focus on the increasing accessibility of Smartphone technologies, specifically the universal accessibility features (i.e. text-to-speech, voice recognition, text messaging functions, etc.). This session will include a discussion of:

- The differences and similarities, in terms of accessibility, between the four major operating systems (Apple iPhone, Android, Blackberry and Windows)
- The built-in tools/features that enable access to Smartphones for people with disabilities
- A few readily available, accessibility apps

Who Should Attend? Consumers who are preparing to make a purchase, or trying to learn more about the accessibility, of various Smartphone operating systems.

When? Wednesday, June 8th from 10:30am-12:00pm.

Presenters from [WATAP](#) (Washington Assistive Technology Act Program) will discuss this information and more. WATAP is a federally funded program that offers low cost and free Assistive Technology services to Washington residents of all ages with any disability. Information on alternative financing will also be available from the Washington Access Fund.

To Register:

Please call (206) 328-5116 or send an email to leann@washingtonaccessfund.org. There is no cost to attend. You can log on from any computer that has internet access. Information and instructions on how to sign onto the webinar will be provided after registration. Please provide 7 days advance notice for any accommodations needed.

We're excited for you to join us on **Wednesday, June 8th!**

2012 FEDERAL BUDGET BY ROB HONAN, SILC EXECUTIVE

With the 2011 budget fight out of the way and the debt ceiling debate heating up, looming on the horizon is the 2012 budget battle.

As many of you may have seen in the news, one of the elements that has been discussed is revamping the Medicare system to address future funding and access to this program. . The House 2012 budget was passed on a largely party-line vote in April. Most pundits agree that the House budget has very little chance of passing the Senate, and

even if remotely passed by the Senate, the budget bill would not be signed into law by President Obama.

While newscasts have focused on the Medicare (and other health-related) components of the budget, federal Independent Living funding is being closely watched by our community. There is a proposal from the President to restructure the way CIL funding comes from the federal government. The Administration proposes that both Part B and C funding be combined and provided

to the states for distribution to the CILs.

This proposal has not been well-received in the IL community, both in this state and nationally. For one thing, the current structure in which funding comes directly (as in Part C) to the CILs allows for maximum citizen participation (a hallmark of IL) in the process. From a financial point of view, funding going directly from the federal government to the CILs has proven to be an expedient process,

something that is important to the CILs from a business perspective.

It was nearly twenty years ago that the changes in the funding mechanism took place (during the reauthorization of the Rehabilitation Act), and IL advocates would prefer not to devolve to before 1992. For more information, please visit: www.ncil.org (The National Council on Independent Living website)

SILC MEETING AND PUBLIC FORUM (CLICK FOR MORE INFORMATION) : PORT ANGELES. JULY 7TH, 2-4 PM (PUBLIC FORUM) AND JULY 8TH. 9 TO 3:00 (SILC BUSINESS MEETING) @ DVR OFFICE: 228 W. FIRST STREET, PORT ANGELES